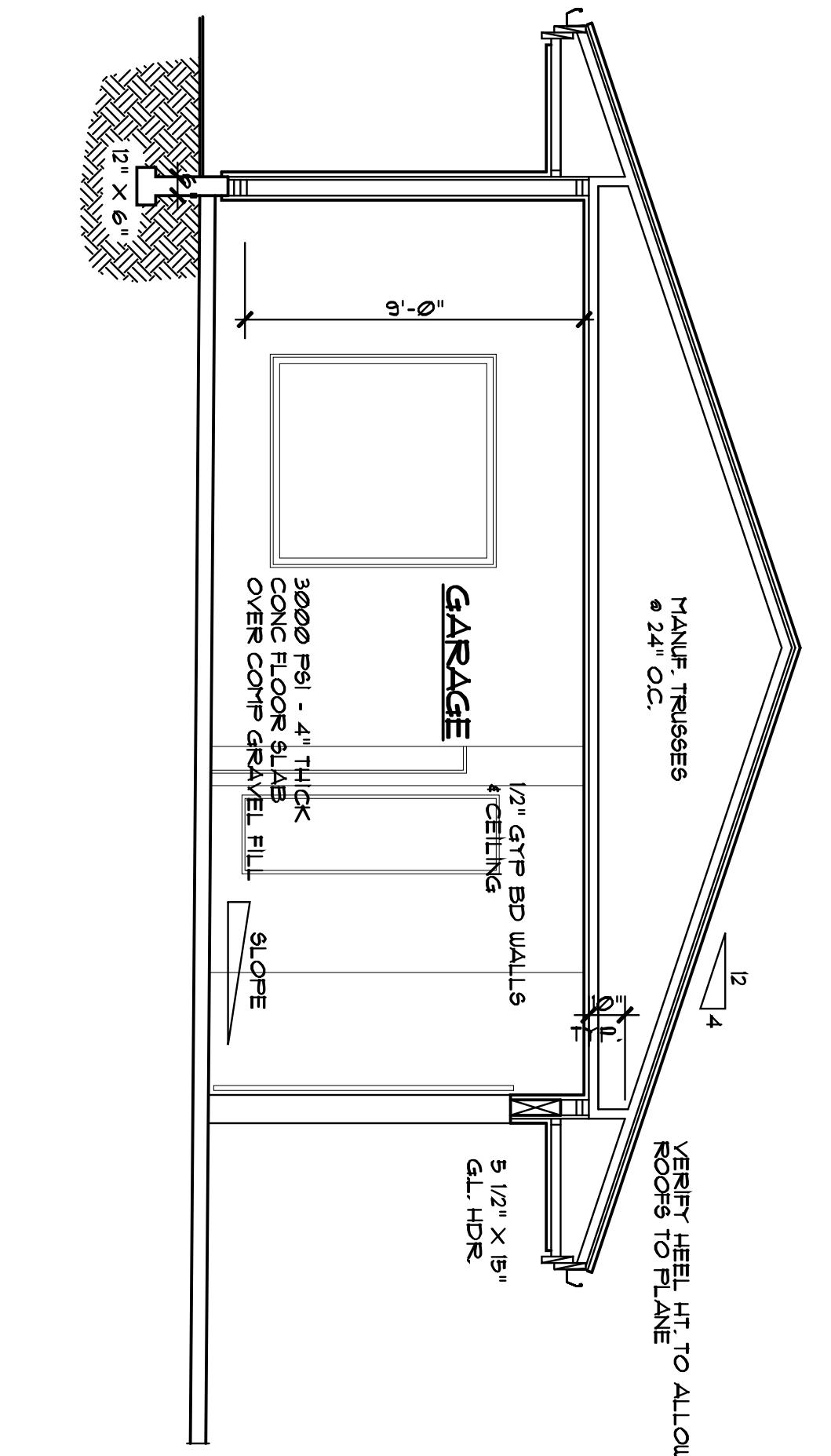
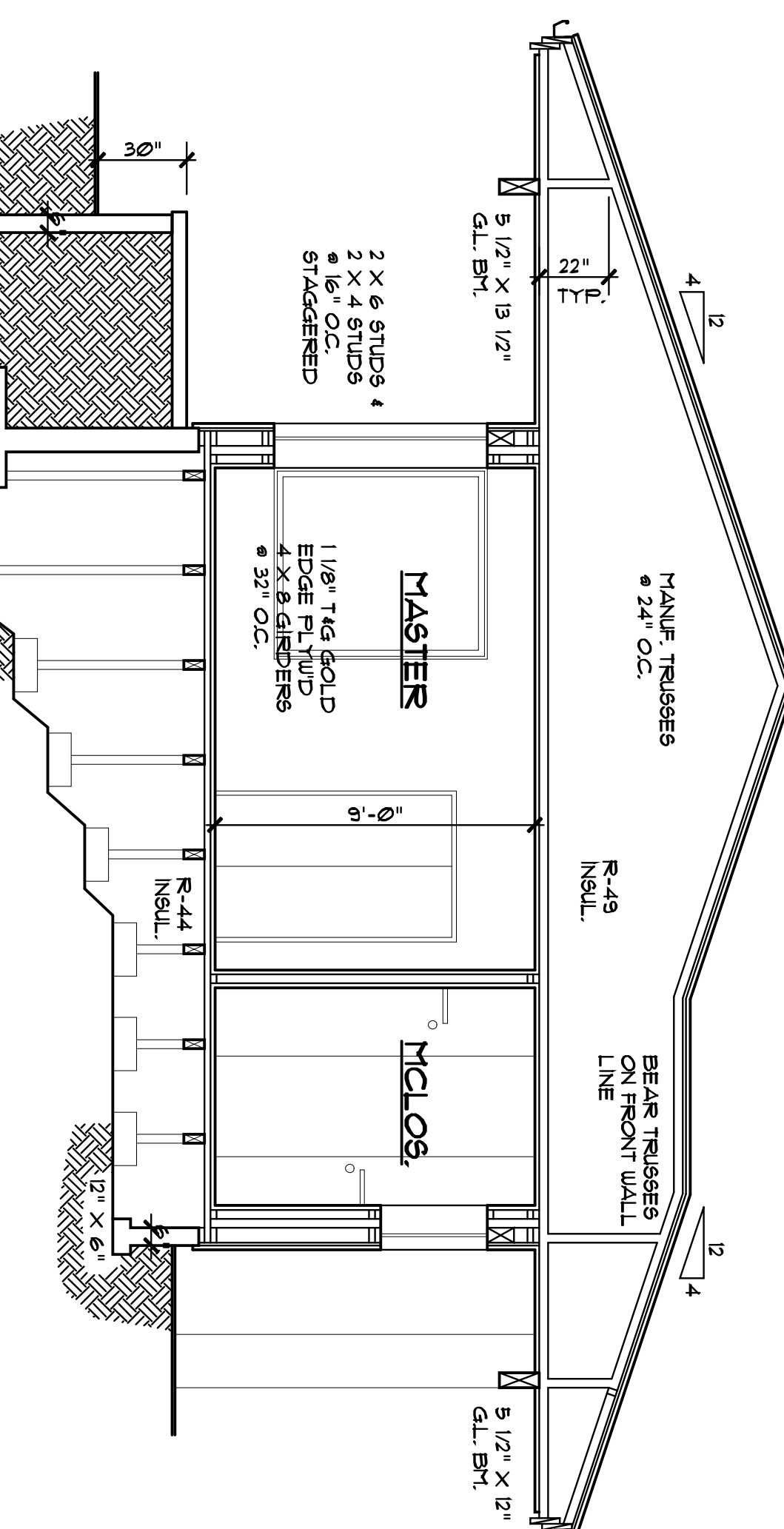


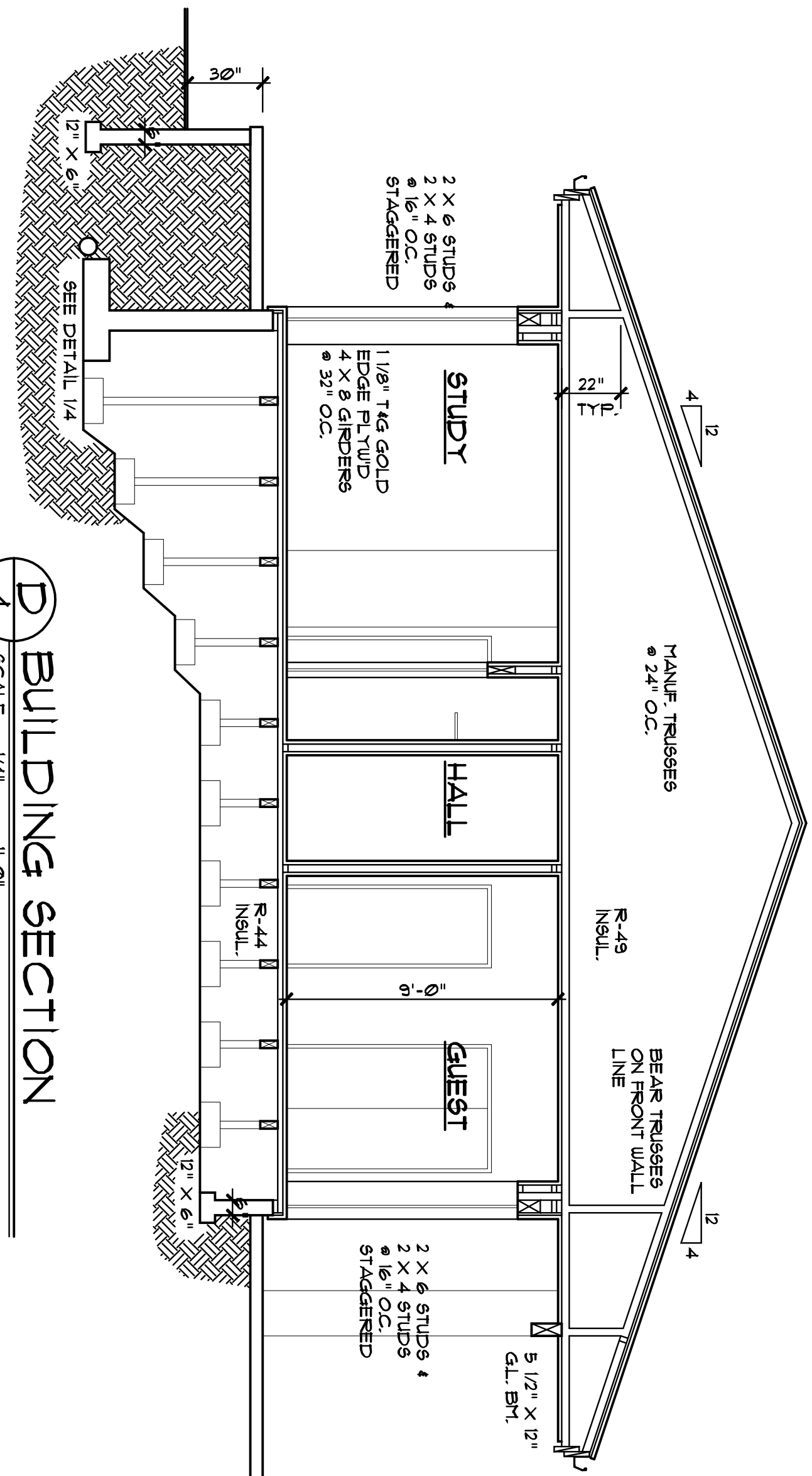
A BUILDING SECTION
SCALE: 1/4" = 1'-0"



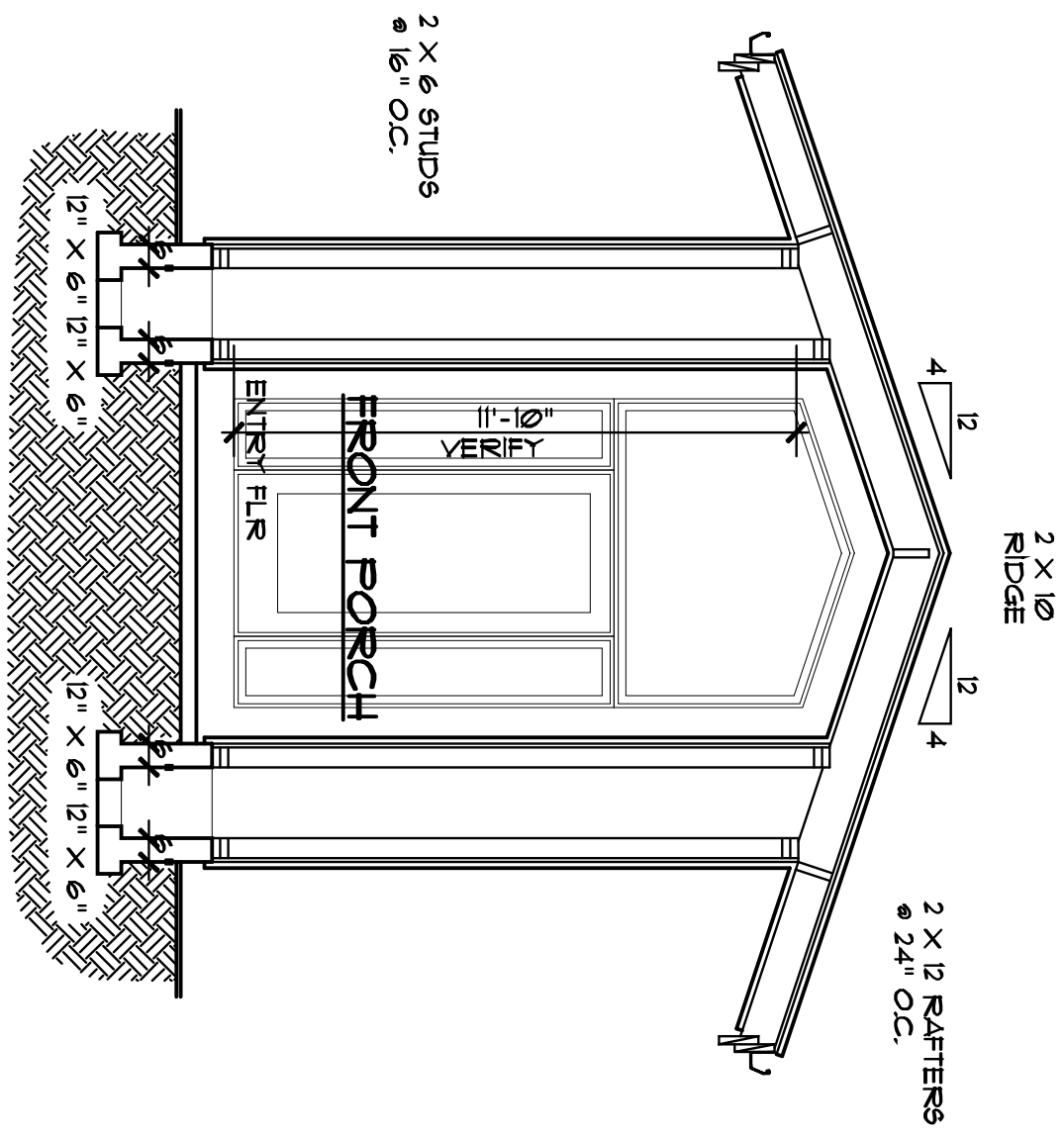
B BUILDING SECTION
SCALE: 1/4" = 1'-0"



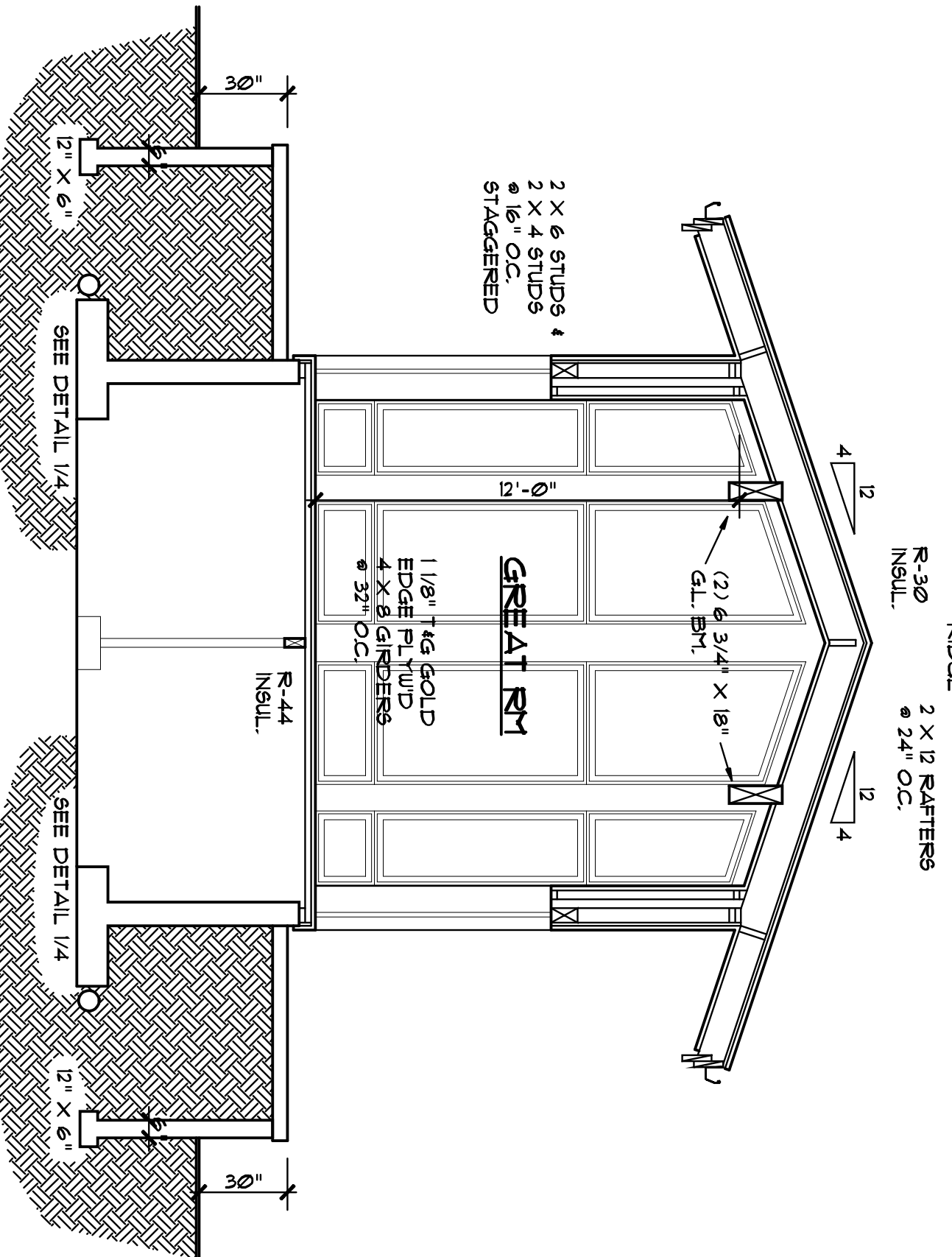
C BUILDING SECTION
SCALE: 1/4" = 1'-0"



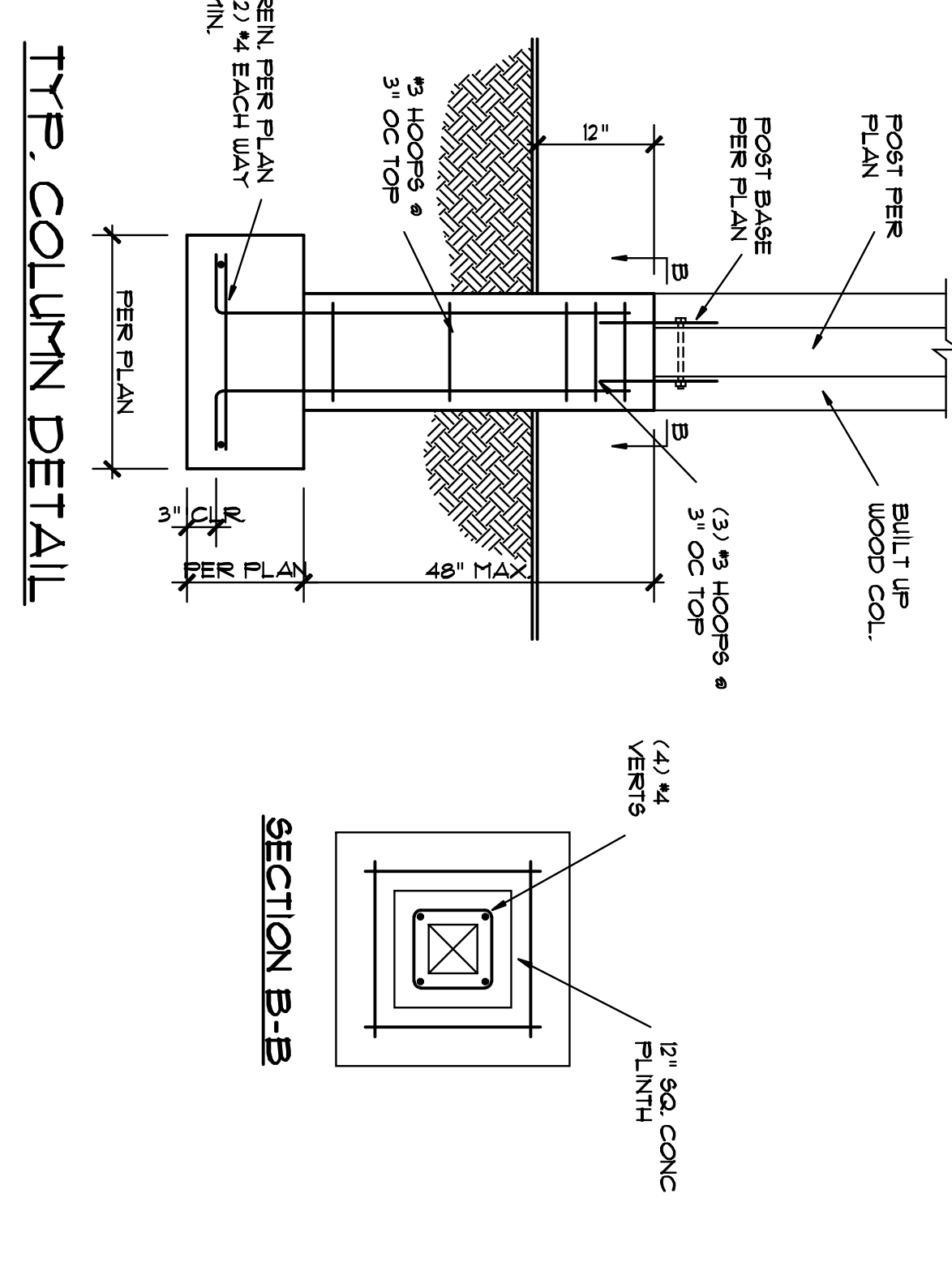
D BUILDING SECTION
SCALE: 1/4" = 1'-0"



E BUILDING SECTION
SCALE: 1/4" = 1'-0"



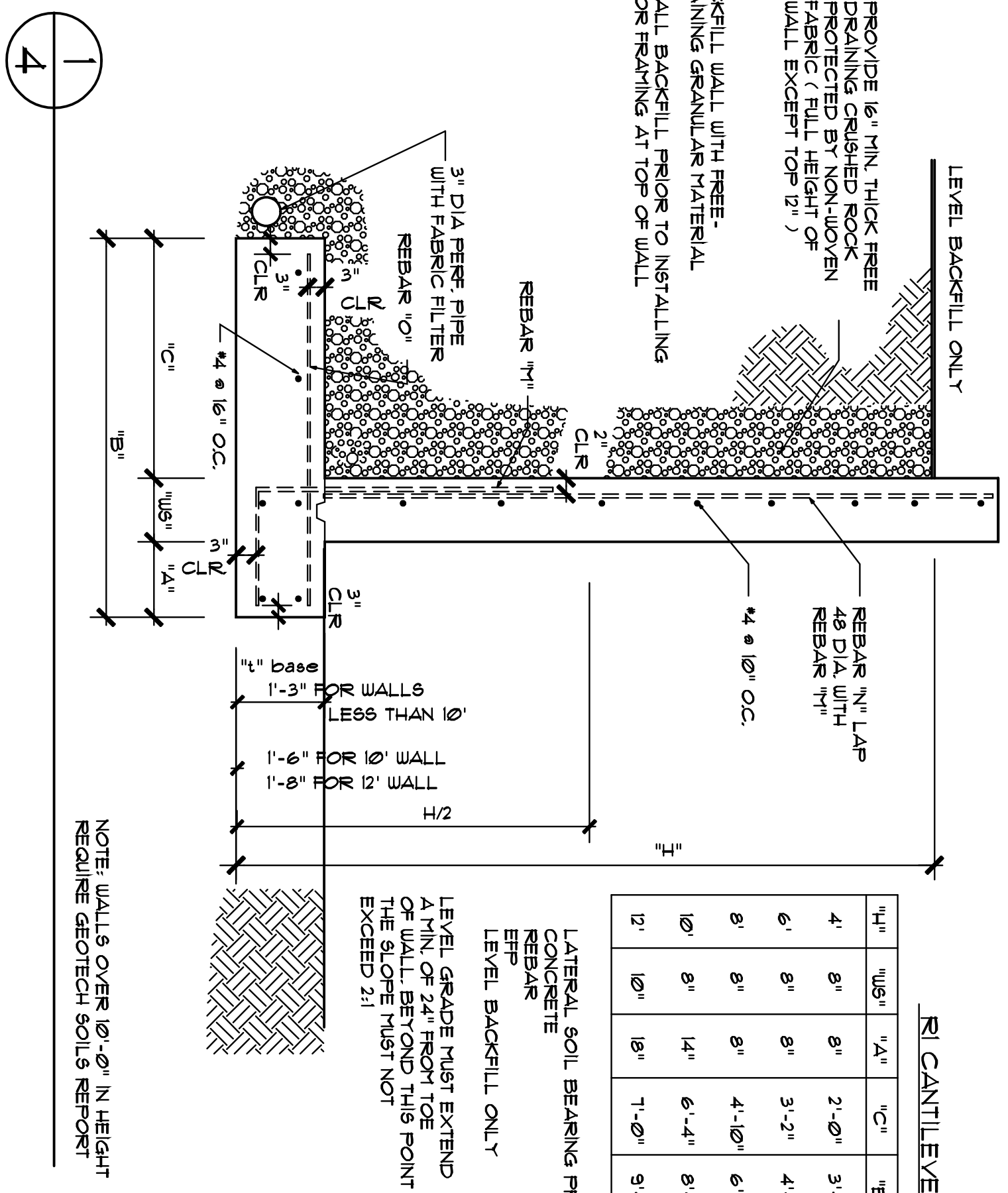
F BUILDING SECTION
SCALE: 1/4" = 1'-0"



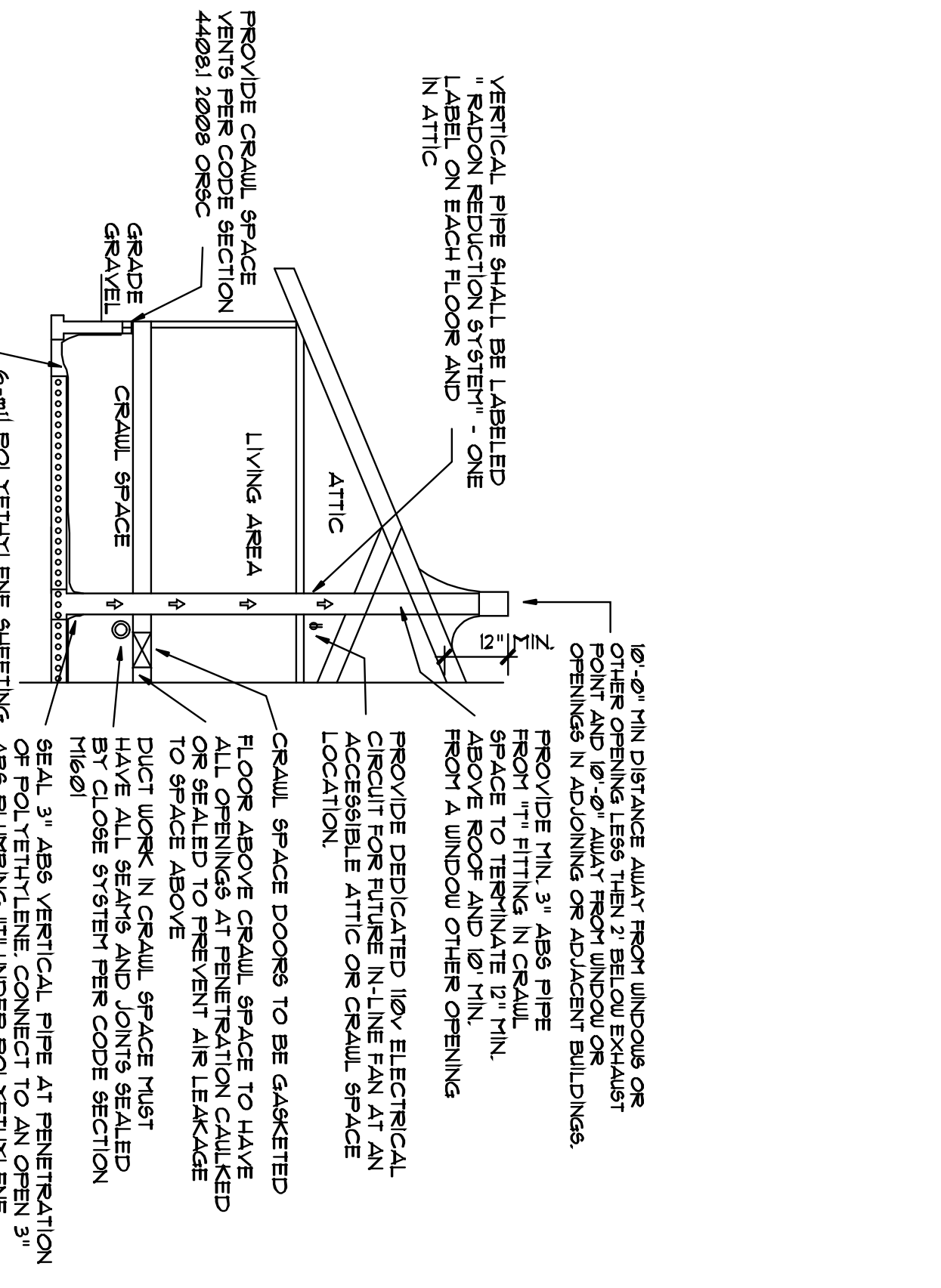
TYP. COLUMN DETAIL

R/CANTILEVER RETAINING WALL SCHEDULE

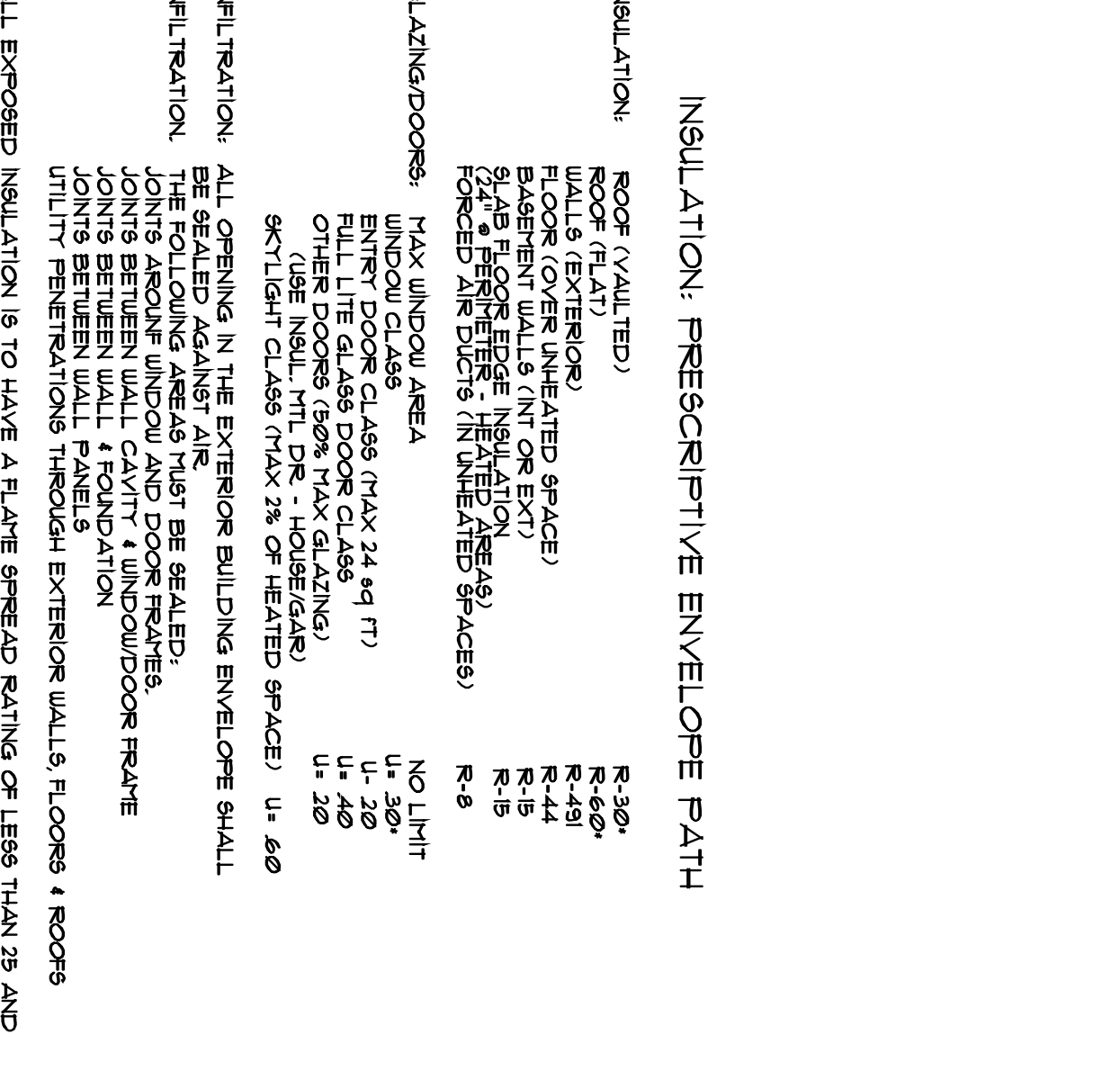
LINE	W/3'	W/4'	W/5'	W/6'	W/7'	W/8'	W/9'	W/10'	REBAR NO.	REBAR TYP.	REBAR LOC.
1	4"	6"	8"	10"	12"	14"	16"	18"	4#5	TOP	4#5 @ 24" O.C.
2	4"	6"	8"	10"	12"	14"	16"	18"	4#5	TOP	4#5 @ 24" O.C.
3	6"	8"	10"	12"	14"	16"	18"	20"	4#5	TOP	4#5 @ 24" O.C.
4	6"	8"	10"	12"	14"	16"	18"	20"	4#5	TOP	4#5 @ 24" O.C.
5	8"	10"	12"	14"	16"	18"	20"	22"	4#5	TOP	4#5 @ 24" O.C.
6	8"	10"	12"	14"	16"	18"	20"	22"	4#5	TOP	4#5 @ 24" O.C.
7	10"	12"	14"	16"	18"	20"	22"	24"	4#5	TOP	4#5 @ 24" O.C.
8	10"	12"	14"	16"	18"	20"	22"	24"	4#5	TOP	4#5 @ 24" O.C.
9	12"	14"	16"	18"	20"	22"	24"	26"	4#5	TOP	4#5 @ 24" O.C.
10	12"	14"	16"	18"	20"	22"	24"	26"	4#5	TOP	4#5 @ 24" O.C.
11	14"	16"	18"	20"	22"	24"	26"	28"	4#5	TOP	4#5 @ 24" O.C.
12	14"	16"	18"	20"	22"	24"	26"	28"	4#5	TOP	4#5 @ 24" O.C.
13	16"	18"	20"	22"	24"	26"	28"	30"	4#5	TOP	4#5 @ 24" O.C.
14	16"	18"	20"	22"	24"	26"	28"	30"	4#5	TOP	4#5 @ 24" O.C.
15	18"	20"	22"	24"	26"	28"	30"	32"	4#5	TOP	4#5 @ 24" O.C.
16	18"	20"	22"	24"	26"	28"	30"	32"	4#5	TOP	4#5 @ 24" O.C.
17	20"	22"	24"	26"	28"	30"	32"	34"	4#5	TOP	4#5 @ 24" O.C.
18	20"	22"	24"	26"	28"	30"	32"	34"	4#5	TOP	4#5 @ 24" O.C.
19	22"	24"	26"	28"	30"	32"	34"	36"	4#5	TOP	4#5 @ 24" O.C.
20	22"	24"	26"	28"	30"	32"	34"	36"	4#5	TOP	4#5 @ 24" O.C.
21	24"	26"	28"	30"	32"	34"	36"	38"	4#5	TOP	4#5 @ 24" O.C.
22	24"	26"	28"	30"	32"	34"	36"	38"	4#5	TOP	4#5 @ 24" O.C.
23	26"	28"	30"	32"	34"	36"	38"	40"	4#5	TOP	4#5 @ 24" O.C.
24	26"	28"	30"	32"	34"	36"	38"	40"	4#5	TOP	4#5 @ 24" O.C.
25	28"	30"	32"	34"	36"	38"	40"	42"	4#5	TOP	4#5 @ 24" O.C.
26	28"	30"	32"	34"	36"	38"	40"	42"	4#5	TOP	4#5 @ 24" O.C.
27	30"	32"	34"	36"	38"	40"	42"	44"	4#5	TOP	4#5 @ 24" O.C.
28	30"	32"	34"	36"	38"	40"	42"	44"	4#5	TOP	4#5 @ 24" O.C.
29	32"	34"	36"	38"	40"	42"	44"	46"	4#5	TOP	4#5 @ 24" O.C.
30	32"	34"	36"	38"	40"	42"	44"	46"	4#5	TOP	4#5 @ 24" O.C.



LEVEL BACKFILL ONLY
NOTE: WALLS OVER 6' HEIGHT REQUIRE SECTION SOIL REPORT



ROOF PLAN
SCALE: 1/8" = 1'-0"



INSULATION: PRESCRIPTIVE ENVELOPE PATH

ALL EXTERIOR INSULATION IS TO HAVE A R-VALUE EQUAL TO THAT OF THE INSULATION IN THE EXTERIOR WALLS, FLOORS & ROOFS. PROVIDE 50% EFFICIENT GAS BARRIER w/ PERFORMANCE TESTED DUCT SYSTEM. PROVIDE 50% EFFICIENT GAS BARRIER w/ PERFORMANCE TESTED DUCT SYSTEM. THIS BARRIER DOES NOT HAVE TO BE A GAS BARRIER. PROVIDE 50% EFFICIENT GAS BARRIER w/ PERFORMANCE TESTED DUCT SYSTEM. PROVIDE 50% EFFICIENT GAS BARRIER w/ PERFORMANCE TESTED DUCT SYSTEM.

General Notes and Disclaimers: These drawings have been prepared to meet generally accepted professional standards. However, local variations may require changes. Likewise, building code requirements vary with location and change from time to time. Before starting construction, the builder must review and be responsible for all details and dimensions, and ensure that these plans meet all current requirements in your area. It is also suggested that a local architect and/or engineer be retained to review and make any changes necessary to ensure that plans meet all requirements, and that you check with your local building department to see if a professional stamp is required on drawings filed for permit purposes. All applicable construction shall conform to the latest editions of cities "Uniform Building Code" and the "BOCA Basic Building Code," or any other locally required code. Codes govern over drawings. Dimensions govern over text. Verify all mechanical requirements before framing. Verify topographic and subsurface conditions, and adopt foundation plans accordingly.



15515 S.E. For Mor Ct.
Clackamas, OR 97015
(503) 557-2334

All ideas, arrangements, drawings, and plans set forth on this sheet are the original work product of, owned by, and are the property of Barclay Home Designs Inc. Use of this said work product is limited to a specified project of the purchaser, and for the construction of one building, any use, reuse, or disclosure of said plans, reproductions, ideas, designs, and/or arrangements other than by Barclay Home Designs Inc. is strictly prohibited by law without the written permission of Barclay Home Designs Inc. Barclay Home Designs Inc. and its employees shall not be responsible for all dimensions and conditions on the job. This office must be notified of any variations and discrepancies of and from these drawings prior to work on the job.